

TECH DATA SHEET

PROJOINT POLYSWEEP

BLOCK PAVING SETTING SAND



PREPARATION:

PRIOR TO INSTALLING PROJINT POLYSWEEP, ENSURE THAT PAVEMENT JOINTS AND SURFACE ARE COMPLETELY DRY AND CLEAN. ADDITIONALLY, ENSURE THAT THERE IS NO RAIN FORECASTED FOR AT LEAST 12 HOURS AFTER INSTALLATION. IF THERE IS A POSSIBILITY OF RAIN SHORTLY AFTER INSTALLATION, COVER THE AREA WITH A TARPAULIN SHEET. REMOVE THE TARPAULIN AS SOON AS THE THREAT OF RAIN IS GONE. INSTALL PROJINT POLYSWEEP WHEN THE AVERAGE AIR TEMPERATURE IS ABOVE 5°C FOR A MINIMUM OF 48 HOURS AFTER INSTALLATION. ALWAYS WEAR APPROPRIATE PPE, INCLUDING EYEWEAR AND A DUST MASK. PAVING SHOULD BE LAID ON A PERMEABLE BEDDING MIX, AS POLYSWEEP CURES WHEN IT DRIES OUT. THEREFORE, WATER/RAIN MUST HAVE A ROUTE OF ESCAPE. CHECK THAT JOINTS ARE CLEANED OUT TO A MINIMUM DEPTH OF 20MM, OBSERVING A MINIMUM JOINT WIDTH OF 1MM. IF YOU ARE USING POLYSWEEP ON PAVING, ENSURE THAT IT IS FIRMLY BEDDED AND STABLE BEFORE FILLING JOINTS.

APPLICATION INSTRUCTIONS:

1: DISTRIBUTE POLYSWEEP EVENLY ACROSS THE SURFACE. SWEEP SAND INTO JOINTS UNTIL FULL, BEING CAREFUL NOT TO PUSH THE PRODUCT OVER LONG DISTANCES ON THE SURFACE. AFTER THE JOINTS ARE FILLED, SWEEP EXCESS PRODUCT FROM THE SURFACE. **2:** FOR BLOCK PAVERS, RUN A VIBRATING PLATE COMPACTOR (WACKER PLATE) OVER THE BLOCKS TO ALLOW THE VIBRATIONS TO CONSOLIDATE SAND PARTICLES INTO THE JOINTS AND REDUCE VOIDS. FOR PAVING SLABS AND SETTS, ATTACH AND USE A RUBBER MAT ONTO A WACKER PLATE TO VIBRATE SAND PARTICLES INTO VOIDS. ALTERNATIVELY, USING A RUBBER Mallet WITH A PIECE OF WOOD WILL SUFFICE. SWEEP ADDITIONAL SAND INTO THE JOINTS IF NECESSARY, SO THAT THE HEIGHT OF THE SAND IS APPROXIMATELY 3MM BELOW THE PAVEMENT SURFACE. (DO NOT OVERFILL JOINTS.) REMOVE EXCESS PRODUCT FROM THE SURFACE. REPEAT COMPACTION. **3:** AFTER THE JOINTS ARE FILLED, SWEEP THE SURFACE WITH A SOFT BRUSH AND THEN USE A LEAF BLOWER HELD ON A SLIGHT ANGLE BUT CLOSE TO PARALLEL TO THE SURFACE TO REMOVE ANY EXCESS SAND/DUST FROM THE TOP OF THE SURFACE. WITHOUT ACCESS TO A LEAF BLOWER, WE RECOMMEND BRUSHING THE SURFACE MULTIPLE TIMES TO REMOVE ALL EXCESS SAND/DUST FROM THE SURFACE. TRY TO AVOID REMOVING ANY EXCESS SAND FROM JOINTS. **4:** USING A HOSE, GENTLY MIST THE PAVING NO GREATER THAN 45M² AT A TIME. ALLOW WATER TO ABSORB FOR APPROXIMATELY 5 MINUTES AND REPEAT THE MISTING PROCESS THREE TO FOUR TIMES, EACH TIME GRADUALLY ADDING MORE VOLUME OF WATER. IT IS CRUCIAL THAT THE WATER PENETRATES THROUGH THE WHOLE JOINT, NOT JUST THE TOP LAYER. THE LAST WATERING SHOULD BE SUFFICIENT TO RINSE OFF ANY RESIDUAL MATERIAL FROM THE SURFACE. IN ONE OF THE JOINTS, CHECK THE MOISTURE DEPTH IN THE SAND WITH A SCREWDRIVER TO SEE THAT IT HAS PENETRATED THROUGH THE WHOLE JOINT. REPLACE SAND AND ONLY APPLY ADDITIONAL MISTING IF THE WATER HASN'T PENETRATED FULLY. **5:** ANY RESIDUAL SURFACE WATER CAUGHT IN THE TEXTURE OF THE PAVERS OR NATURAL STONE SHOULD BE BLOWN OFF THE SURFACE WITH A LEAF BLOWER OR REMOVED WITH A SOFT BRUSH. **6:** LEAVE TO CURE. PROJINT POLYSWEEP CONTAINS NO PORTLAND CEMENT. CURE TIMES ARE DEPENDENT ON TEMPERATURE AND HUMIDITY, BUT AS A GUIDE PAVING CAN ACCEPT TRAFFIC AFTER 24 HOURS. COOL, DAMP AND OVERCAST CONDITIONS WILL DECREASE POLYSWEEP CURING SPEED.

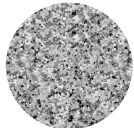
CAUTION ON APPLICATION:

DO NOT APPLY TOO MUCH WATER TOO FAST. ALLOW WATER TO ABSORB FOR APPROXIMATELY 5 MINUTES BEFORE REPEATING THE MISTING PROCESS. ENSURE THE SURFACE OF THE PAVING IS CLEAN PRIOR TO APPLICATION. PROJINT ULTIMATE PAVING CLEANER CAN BE USED TO REMOVE DIRT, ALGAE DUST FROM THE JOINTS AND PAVERS. FOLLOWING CLEANING, MAKE SURE THE PAVERS AND JOINTS ARE COMPLETELY DRY PRIOR TO INSTALLING PROJINT POLYSWEEP. DO NOT APPLY THIS PRODUCT TO ANY WET OR DAMP SURFACE BECAUSE THE POLYMERIC SAND WILL ADHERE TO THE SURFACE AND IS DIFFICULT TO REMOVE. WHEN PRESSURE WASHING, KEEP THE NOZZLE AT LEAST A FOOT AWAY FROM THE SURFACE WHILE AT 40 DEGREES TO THE PAVERS, DO NOT TARGET THE JOINTS. PRESSURE WASHER SURFACE CLEANERS ARE THE MOST EFFECTIVE WAY OF CLEANING THE PAVERS WITHOUT HARMING THE JOINTS. PROJINT POLYSWEEP HAS A LOW LEVEL OF PERMEABILITY, THEREFORE, PAVERS MUST HAVE ADEQUATE DRAINAGE AND/OR FALLS.

AVAILABLE IN TWO VERSATILE COLOURS



NEUTRAL | BUFF



SILVER-GREY



APPLICATION DEMO

APPLICATION IMAGERY



TESTING TWO COLOURS FOR DETERMINATION OF AVERAGE VALUES

SYSTEM	POLYMERIC BRUSH-IN SAND FOR BLOCK PAVING, NATURAL STONE AND PORCELAIN PAVING
STORAGE	STORE IN A COOL, DRY, AND FROST FREE ENVIRONMENT AT TEMPERATURES BETWEEN 5°C AND 30°C
SHELF LIFE	12 MONTH FROM DATE OF MANUFACTURE
PACKAGING	20KG BAGS DELIVERED ON SHRINK-WRAPPED PACKAGING
PALLET QUANTITY	50 UNITS
COVERAGE	AS SHOWN ON COVERAGE TABLE
COLOURS	NEUTRAL, SILVER-GREY
WALK ON CURING TIME	24 HOURS IN DRY AMBIENT CONDITIONS
DRIVE ON CURING TIME	24 HOURS IN DRY AMBIENT CONDITIONS
FULL STRENGTH	28 DAYS
SUB BASE REQUIREMENT	FULL SOLID BED WITH A PERMEABLE BEDDING MORTAR OR RECOMMENDED 1:5 OF SAND AND CEMENT

KEY FACTS:



- ✓ SUPERIOR STRENGTH SETTING SAND FOR LONG LASTING JOINTS.
- ✓ FOR BLOCK PAVING, NATURAL STONE & PORCELAIN PAVING
- ✓ PREMIXED, BRUSH-IN FORMULA FOR FAST & EASY APPLICATION.
- ✓ STAIN FREE WITH ADVANCED CLEAR SET TECHNOLOGY.
- ✓ PRESSURE WASHER, WEED & FROST RESISTANT.
- ✓ IDEAL FOR JOINT WIDTHS FROM 1MM UPWARDS.
- ✓ CONTAINS NO PORTLAND CEMENT

STORAGE - KEEP PRODUCT DRY

PROJOINT POLYSWEEP MUST ALWAYS BE STORED IN A DRY LOCATION AND PROTECTED FROM RAIN AND MOISTURE AT ALL TIMES.

'precisely formulated for use
with block paving, natural stone
& porcelain paving...'

BRUTE STRENGTH PAVING PRODUCTS

DISCOVER MORE: CALL: 01937 858000 | SALES@NEXUSPROSYSTEMS.CO.UK | WWW.NEXUSPAVINGSYSTEMS.CO.UK



TECH DATA SHEET

PROJOINT

POLYSWEEP

BLOCK PAVING SETTING SAND



APPROXIMATE COVERAGE PER 20KG BAG

JOINT SIZE	200 X 160MM BLOCK PAVERS	200 X 100MM BLOCK PAVERS	600 X 900MM SLABS
2MM X 50MM	12.3m ²	9.3m ²	50m ²
2MM X 60MM	10.3m ²	7.8m ²	42m ²
5MM X 20MM	12.4m ²	9.3m ²	50m ²

HEALTH & SAFETY ADVISORY

HAZARD STATEMENTS:

MAY CAUSE CANCER. WEAR APPROPRIATE PPE AT ALL TIMES.
MAY CAUSE DAMAGE TO ORGANS (LUNGS) THROUGH PROLONGED OR REPEATED EXPOSURE.
CAUSES SKIN IRRITATION. WEAR APPROPRIATE CLOTHING PROTECTION.
CAUSES SERIOUS EYE IRRITATION. WEAR APPROPRIATE EYE PROTECTION.

PRECAUTIONARY STATEMENTS:

OBTAIN INSTRUCTIONS BEFORE USE. DO NOT HANDLE UNTIL ALL SAFETY PRECAUTIONS HAVE BEEN READ AND UNDERSTOOD. WASH ANY EXPOSED BODY PARTS. WEAR PROTECTIVE GLOVES/PROTECTIVE CLOTHING/EYE PROTECTION/FACE PROTECTION. IF EXPOSED OR CONCERNED: GET MEDICAL ADVICE/ATTENTION. IF ON SKIN: WASH WITH PLENTY OF WATER. TAKE OFF CONTAMINATED CLOTHING AND WASH IT BEFORE REUSE. IF IN EYES: RINSE CONTINUOUSLY WITH WATER FOR SEVERAL MINUTES. REMOVE CONTACT LENSES IF PRESENT AND EASY TO DO.

SUPPLEMENTAL INFORMATION:

RESPIRABLE CRYSTALLINE SILICA (RCS) MAY CAUSE CANCER. POLYSWEEP CONTAINS VARYING QUANTITIES OF QUARTZ (CRYSTALLINE SILICA). IN ITS NATURAL BULK STATE, THE SAND AND GRAVEL IN POLYSWEEP IS NOT A KNOWN HEALTH HAZARD. POLYSWEEP MAY BE SUBJECTED TO VARIOUS NATURAL OR MECHANICAL FORCES THAT PRODUCE SMALL PARTICLES (DUST) WHICH MAY CONTAIN RESPIRABLE CRYSTALLINE SILICA (PARTICLES LESS THAN 10 MICROMETERS IN AERODYNAMIC DIAMETER). REPEATED INHALATION OF RESPIRABLE CRYSTALLINE SILICA (QUARTZ) MAY CAUSE LUNG CANCER ACCORDING TO IARC AND NTP; ACGIH STATES THAT IT IS A SUSPECTED CAUSE OF CANCER. OTHER FORMS OF RCS (E.G. TRIDYMITTE AND CRISTOBALITE) MAY ALSO BE PRESENT OR FORMED UNDER CERTAIN INDUSTRIAL PROCESSES.

TECHNICAL HELPLINE & CONTACT:

FOR TECHNICAL ENQUIRIES PLEASE CALL THE NEXUS PROJJOINT TEAM: TEL. +44 (0) 1937 858000 OR EMAIL: SALES@NEXUSPROSYSTEMS.CO.UK
TECHNICAL HELPDASK OPENING HOURS ARE MONDAY TO FRIDAY 8:30AM UNTIL 5:00PM EXCLUDING PUBLIC BANK HOLIDAYS.
PROJJOINT POLYSWEEP IS MANUFACTURED IN GREAT BRITAIN BY NEXUS PRO SYSTEMS LTD.



BAG CALCULATOR



HAZARDOUS CAUTION



DO NOT BREATH DUST

20KG
HEAVY LIFT WITH CARE

RECOMMENDATION:



PROJOINT

PRO410

ENHANCING PAVING SEALER

- ✓ POWERFUL WATER REPELLANT FOR POROUS PAVING
- ✓ BREATHABLE, ENHANCES, SEALS AND PROTECTS
- ✓ RESISTS DIRT, GRIME AND ALGAE
- ✓ LONG LASTING PROTECTION AND UV STABLE
- ✓ MATT FINISH AND EASY SINGLE COAT APPLICATION
- ✓ HIGH COVERAGE RATE FOR NATURAL STONE AND CONCRETE

PROJJOINT PRO410 IS A HIGH QUALITY COLOUR ENHANCING SOLVENT BASED 'MATT FINISH' SEALER FOR USE WITH ALL TYPES OF NATURAL STONE AND CONCRETE PAVING. PRO410 IMPREGNATES THE STONE AND CREATES A POWERFUL BARRIER, PROTECTING SURFACES FROM WATER PENETRATION, STAINING, AND THE EFFECTS OF NATURAL WEATHERING WHILST REMAINING BREATHABLE. PRO410 IS SUITABLE FOR ALL TYPES OF HIGH QUALITY NATURAL STONE PAVING. WE RECOMMEND USING PRO410 AFTER POLYSWEEP HAS FULL CURED FOR A PERFECT PROFESSIONAL FINISH.



BRUTE STRENGTH PAVING PRODUCTS

DISCOVER MORE: CALL: 01937 858000 | SALES@NEXUSPROSYSTEMS.CO.UK | WWW.NEXUSPAVINGSYSTEMS.CO.UK